

## PASARALE

 SLEEPS 10



### AT A GLANCE

- 2 double bedrooms with en-suite bathroom
- 2 twin rooms with en-suite bathrooms
- 1 twin room with en-suite shower room
- SKY TV & DVD + WiFi
- Ipod docking station
- Nespresso machine
- Hairdryer, bathrobes & slippers in each bedroom
- Toiletries provided
- Log fire
- Sun terrace
- Ski locker and heated boot drier
- Garage parking for 2 cars

## *Stylish interior and a great location*

Take advantage of Chalet Pasarale's great location, within easy walking distance of the piste, ski school meeting points and main lift station at La Chaudanne. Within minutes you are able to stroll into Meribel centre and enjoy the village atmosphere and all it has to offer.

The stylish and contemporary decor ensures absolute comfort and provides the perfect place to relax after a busy day outdoors in the Three Valleys. With a spacious sitting room, ample comfortable sofas and large fire place in the heart of the room, you can sit back and enjoy pre dinner drinks and canapes in front of the roaring log fire. The open plan kitchen and dining area leads off the sitting room. With 5 very comfortable ensuite bedrooms this chalet is ideal for families or a group of friends.

Chalet Pasarale has recently under gone a full interior renovation, ensuring that this delightful chalet has been further enhanced with bespoke soft furnishings, beautiful bedroom decor and new bathrooms. Guests will be extremely comfortable and enjoy the charming interior that this chalet has to offer.

## CHALET INFORMATION

### Our Menus

Our chalet staff will ensure you enjoy delicious meals during your stay and they will serve you with:

- Cooked & continental breakfast each day, except on their 1 full day off taken on a Wednesday when they will leave a self-service continental breakfast.
- Afternoon tea with home baked cake or cookies will be available each day.
- On 6 nights you can look forward to pre-dinner canapés served with sparkling wine, beer & soft drinks, followed by a 4 course dinner served with selected wines & finished with fresh coffee & chocolates.
- Special dietary requirements & early children's supper at 6pm can be catered for, please notify us in advance.
- Please note that whilst we try to be flexible and accommodate reasonable dietary requirements that it is difficult for our chefs to provide many different meal requests.

### Other Services

Daily Housekeeping, except on Wednesday. Quality bed linen, large bath towels, bathrobes, hairdryers & toiletries are provided. We are happy to recommend Meribel Nanny Services if you require private child care. If you would like massages or beauty treatments your chalet host can recommend various therapists who will visit the chalet. Remember to book your lift passes, equipment hire & ski school prior to arrival. For more information - [www.skicuisine.co.uk](http://www.skicuisine.co.uk) We suggest you book your airport transfers well in advance. For recommendations - [www.skicuisine.co.uk/meribel-ski-resort/travel-transfers/](http://www.skicuisine.co.uk/meribel-ski-resort/travel-transfers/)

## ON THE SLOPES

### Lift Passes

We strongly recommend you pre book lift passes and equipment hire and benefit from free delivery to your chalet. You can pre book online at [skipass.skicuisine.co.uk](http://skipass.skicuisine.co.uk) and passes will be delivered to your chalet prior to your arrival.

### Ski/Board Schools

[www.parallel-lines.com](http://www.parallel-lines.com)  
Tel: UK 0844 8112779

### Ski/Board Hire

Ski Cuisine clients can benefit from reduced prices with the following providers when you pre book. [www.slidecandy.com](http://www.slidecandy.com)  
[www.meribel-ski-service.com](http://www.meribel-ski-service.com)

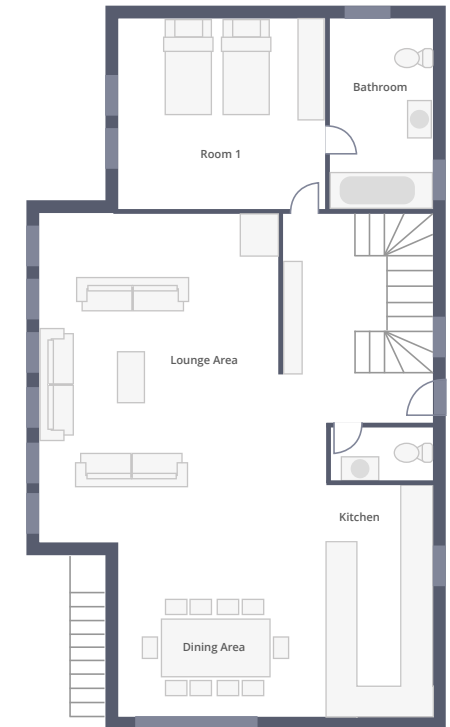
### Travel Information

[www.skicuisine.co.uk](http://www.skicuisine.co.uk) has links to airlines, train services and transport companies. Geneva, Chambéry & Lyon airports are served by the major airlines, contact us for more advice about your transfers to Meribel.

### GROUND FLOOR



### FIRST FLOOR



## MÉRIBEL AT A GLANCE

### Méribel at a glance

La Chaudanne is the skiing centre of Méribel. From here no less than five lifts take you on your way to the slopes. Locker hire is available at La Chaudanne allowing you to leave your equipment secure when you are ready to leave the slopes.

Méribel centre is located next to La Chaudanne offering walking access to the shops, bars and restaurants in the resort. The local free shuttle bus stops at the ice-ink and throughout the resort.

#### KEY

- Méribel Tourist Office, ESF, Carte Neige, SNCF, Coaches, Change, Post Office, Taxis, Reservation, Radio
- Indoors paying car park
- Outdoors free car park
- Pay and display outdoor parking
- Taxis
- Cash point (ATM)
- Garage
- Shuttle stop
- Doctor
- Chemist
- Rescue centre
- Gendarmerie station
- Police station
- Kindergarten
- Parallel Lines meeting point
- E.S.F. meeting point
- Magic in Motion meeting point
- Handicapped access
- Skipass
- Slalom Stadium
- Pedestrian itinerary

**Ski Cuisine**  
A la carte chalets in Meribel

