

## VERONICA

 SLEEPS 10



### AT A GLANCE

- 1 double bedroom with en-suite bathroom
- 1 twin/double bedroom with en-suite bathroom
- 2 twin rooms with shared shower room
- 1 twin room with private bathroom
- Satellite TV & DVD + WiFi
- Ipad docking station
- Nespresso machine
- Hairdryer and bathrobes in each bedroom
- Toiletries provided
- Log fire
- Balcony off the sitting room
- Ski locker and heated boot drier



*Ski in, ski out location  
with wonderful views  
across Meribel Valley*

Ideally located on the piste for those of you keen to get straight onto the slopes.

Chalet Veronica has quick access to the rapid Three Valleys' lift system so it won't be long until you're making the most of the world's largest ski area.

This lovely chalet has a spacious sitting and dining area with an open fire, perfect for relaxing and enjoying the wonderful views of skiers and boarders from the comfort of your chalet.

The bedroom layout makes this chalet a perfect choice for two families or a group of adults wanting to share a chalet. The top floor provides two spacious bedrooms and two bathrooms, ensuring a comfortable stay at Chalet Veronica. On the bottom floor there is a spacious en-suite double bedroom alongside two smaller twin rooms with a shared shower room.

Located at altitude 1600, there are bars and restaurants just a short stroll from the chalet and Meribel is just 15 minutes walk or a quick bus ride away.

Chalet Cecilia is located right next door if you are a larger group wishing to be located close to one another during your skiing holiday

## CHALET INFORMATION

### Our Menus

Our chalet staff will ensure you enjoy delicious meals during your stay and they will serve you with:

- Cooked & continental breakfast each day, except on their 1 full day off taken on a Wednesday when they will leave a self-service continental breakfast.
- Afternoon tea with home baked cake or cookies will be available each day.
- On 6 nights you can look forward to pre-dinner canapés served with sparkling wine, beer & soft drinks, followed by a 4 course dinner served with selected wines & finished with fresh coffee & chocolates.
- Special dietary requirements & early children's supper at 6pm can be catered for, please notify us in advance.
- Please note that whilst we try to be flexible and accommodate reasonable dietary requirements that it is difficult for our chefs to provide many different meal requests.

### Other Services

Daily Housekeeping, except on Wednesday. Quality bed linen, large bath towels, bathrobes, hairdryers & toiletries are provided. We are happy to recommend Meribel Nanny Services if you require private child care. If you would like massages or beauty treatments your chalet host can recommend various therapists who will visit the chalet. Remember to book your lift passes, equipment hire & ski school prior to arrival. For more information - [www.skicuisine.co.uk](http://www.skicuisine.co.uk) We suggest you book your airport transfers well in advance. For recommendations - [www.skicuisine.co.uk/meribel-ski-resort/travel-transfers/](http://www.skicuisine.co.uk/meribel-ski-resort/travel-transfers/)

## ON THE SLOPES

### Lift Passes

We strongly recommend you pre book lift passes and equipment hire and benefit from free delivery to your chalet. You can pre book online at [skipass.skicuisine.co.uk](http://skipass.skicuisine.co.uk) and passes will be delivered to your chalet prior to your arrival.

### Ski/Board Schools

[www.parallel-lines.com](http://www.parallel-lines.com)  
Tel: UK 0844 8112779

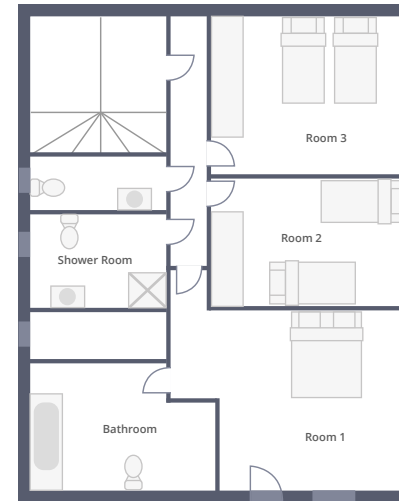
### Ski/Board Hire

Ski Cuisine clients can benefit from reduced prices with the following providers when you pre book. [www.slidecandy.com](http://www.slidecandy.com)  
[www.meribel-ski-service.com](http://www.meribel-ski-service.com)

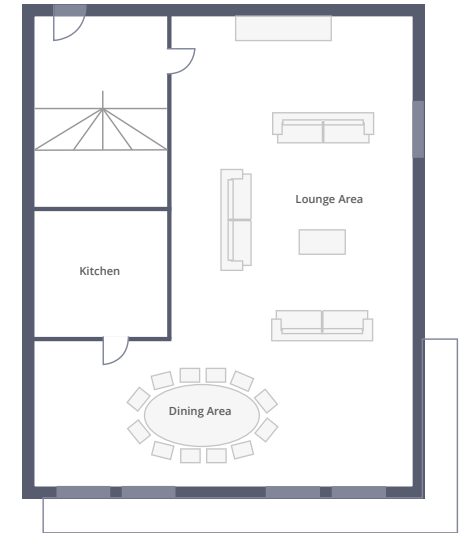
### Travel Information

[www.skicuisine.co.uk](http://www.skicuisine.co.uk) has links to airlines, train services and transport companies. Geneva, Chambéry & Lyon airports are served by the major airlines, contact us for more advice about your transfers to Meribel.

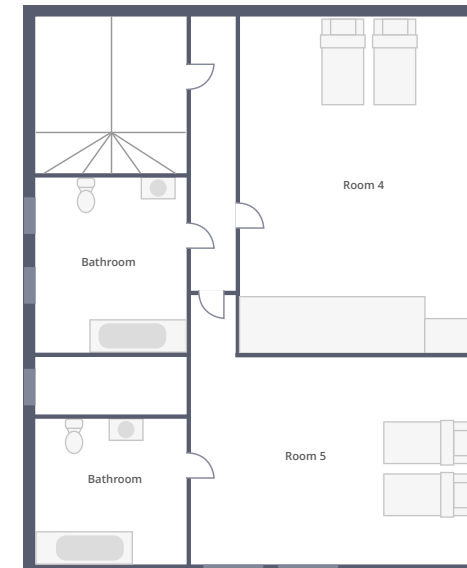
### GROUND FLOOR



### FIRST FLOOR



### SECOND FLOOR



## MÉRIBEL AT A GLANCE

### Méribel at a glance

La Chaudanne is the skiing centre of Méribel. From here no less than five lifts take you on your way to the slopes. Locker hire is available at La Chaudanne allowing you to leave your equipment secure when you are ready to leave the slopes.

Méribel centre is located next to La Chaudanne offering walking access to the shops, bars and restaurants in the resort. The local free shuttle bus stops at the ice-ink and throughout the resort.

#### KEY

- |   |                               |
|---|-------------------------------|
| Méribel Tourist Office, ESF, Carte Neige, SNCF, Coaches, Change, Post Office, Taxis, Reservation, Radio | Chemist                       |
| Indoors paying car park   | Rescue centre                 |
| Outdoors free car park  | Gendarmerie station           |
| Pay and display outdoor parking   | Police station                |
| Taxis   | Kindergarten                  |
| Cash point (ATM)  | Parallel Lines meeting point  |
| Garage  | E.S.F. meeting point          |
| Shuttle stop  | Magic in Motion meeting point |
| Doctor  | Handicapped access            |
|   | Skipass                       |
|   | Slalom Stadium                |
|   | Pedestrian itinerary          |

**Ski Cuisine**  
A la carte chalets in Meribel

